



Avery Berkel works closely with food retailers across the world to develop both large and small fresh food weighing solutions.

It is now easy to manage scales across a network of departments or stores, maximising sales and profits, whilst maintaining control, and adhering to best practice. MXBusiness uses the latest software architecture to deliver efficient, scalable and affordable solutions to customers.

Designed by British engineers, MXBusiness software is tested to be the perfect tool to be used alongside Avery Berkel's range of system scales to take full advantage of their capabilities.

MXBusiness is compatible with the following Avery Berkel scales and Windows operating systems:

Compatible Scales

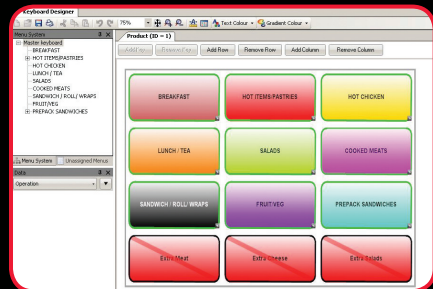
- Xs
- Xm
- Xt

Compatible Operating Systems

- Windows 7
- Windows 8
- Windows 8.1

Connectivity

Connect and update multiple scales for easy product or price updates from one location

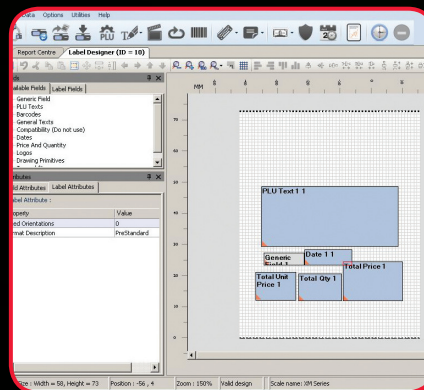


Efficient

Saves time by only performing updates on individual scales as and when required.

Take Control

MXBusiness enables you to schedule tasks such as totals collection and scale backups for when the store is least busy and most convenient, freeing up scales for the most productive and crucial trading times.

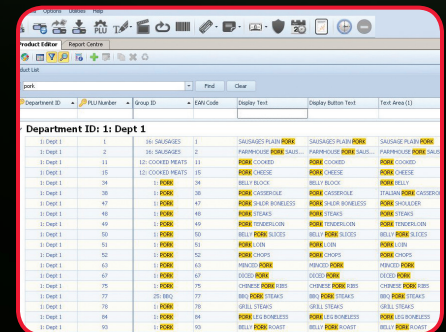


Label Solutions

You can choose from a variety of date options for added flexibility such as today's date/use by date/sell by date. MXBusiness features automatic product ID adjustment to match changed barcodes – saving you time and protecting you from potential errors. Quick start barcode formats are also included, making it easier for you to set up and begin using barcodes with your scale.

Easy Product Searches

MXBusiness can search product listings by department – a simpler, faster and therefore more productive way to search for specific items.



Reporting

Product reporting on "Best Seller" and "Product Performance" provides an insight into items that perform well and can assist with stock ordering decisions. Management reporting such as "Cost Price Management" and "Operator Cash" reports provide information on profitability and performance of individual staff members.

Report Parameters									
Start Date	14/07/2014								
End Date	24/07/2014								
Operator	John, Charles, Charles, Dave, Dave V, Emily, Gordon, Hayley, Hayley, Jake, Jerry, Josh, Mandy, Oscar, Sue, Tom								
Report	Operator Totals Report								
ID	Name	Sales Amount	Trans	Void Amount	Void Count	Net Sales	Paid Out Amount	Customers	Average Basket
1	Gordon	£2,049.27	76	£19.15	6	£2,030.12	£0.00	208	£12.39
2	Charles	£1,200.62	52	£19.29	6	£1,181.33	£0.00	139	£9.39
3	Mandy	£2,700.54	144	£20.45	14	£2,680.09	£376.08	325	£8.23
4	Oscar	£266.66	0	£6.48	2	£260.18	£0.00	22	£11.88
5	Tom	£865.56	0	£15.90	7	£849.66	£0.00	47	£18.09
6	Jerry	£2,659.88	97	£20.72	7	£2,639.16	£0.00	267	£9.92
7	Hayley	£1,777.05	1	£19.98	11	£1,757.07	£0.00	28	£6.34
8	John	£1,180.88	121	£0.00	0	£1,180.88	£0.00	84	£14.11
9	Jerry	£3,044.84	103	£39.84	13	£3,005.00	£0.00	392	£7.77
10	Hayley	£1,039.26	99	£20.12	0	£1,019.14	£0.00	126	£8.14
11	Charles	£938.28	0	£1.45	1	£936.83	£0.00	101	£9.37
12	Jake	£1,131.53	31	£20.81	0	£1,110.72	£0.00	9	£12.30
13	Ash	£5.90	2	£0.45	0	£5.45	£0.00	1	£5.45
15	Oscar	£363.23	27	£0.00	0	£363.23	£0.00	9	£40.36
Network Total		£16,863.97	27	£222.71	77	£16,641.26	£0.00	1,767	£9.54
Report Total		£16,863.97	4617	£222.71	77	£16,641.26	£0.00	1,767	£9.54

Contact Avery Berkel today

+44 (0)870 903 2000
info@averyberkel.com

+44 (0)870 904 2223
www.averyberkel.com

